

M  
C  
C  
O  
M  
M  
U  
N  
I  
T  
Y  
C  
O  
L  
L  
E  
G  
E  
P  
E  
R  
F  
O  
R  
M  
I  
N  
G  
A  
R  
T  
S  
C  
E  
N  
E  
C  
E  
N  
T  
E  
R

**MESA COMMUNITY COLLEGE**

**MUSIC  
PERFORMING  
ARTS CENTER**

**MAIN HALL**

**TECHNICAL INFORMATION PACKAGE**

1833 W. Southern Avenue, Mesa, AZ, 85202  
Campus: 480.461.7000. Fax: 480.461.7530  
E-Mail: alex.keen@mesacc.edu



*A Maricopa Community College*

## TABLE OF CONTENTS

<b>Page 1:</b>	<b>Cover Page</b>
<b>Page 2:</b>	<b>Table of Contents</b>
<b>Page 3:</b>	<b>General Information</b>
<b>Page 4:</b>	<b>Management Information</b>
<b>Page 5:</b>	<b>Carpentry Information</b>
<b>Page 6:</b>	<b>Lighting Information</b>
<b>Page 7:</b>	<b>Sound Information</b>
<b>Page 8:</b>	<b>Wardrobe / Makeup Information</b>
<b>Page 9:</b>	<b>Map</b>
<b>Page 10:</b>	<b>Line Set Schedule</b>
<b>Page 11:</b>	<b>Lighting Equipment Inventory</b>
<b>Page 12:</b>	<b>Theatre Ground Plan</b>
<b>Page 13:</b>	<b>Stage Dimensions</b>
<b>Page 14:</b>	<b>Section at Centerline</b>
<b>Page 15:</b>	<b>Map of Theatre Building</b>
<b>Page 16:</b>	<b>Audience Seating Layout</b>
<b>Page 17:</b>	<b>A/V Connection List</b>
<b>Page 18:</b>	<b>A/V Connection List 2</b>
<b>Page 19:</b>	<b>A/V Signal Flow</b>

# **GENERAL INFORMATION**

## **Technical Services**

Venue Manager Alexander Keen O: 480.461.7522 alex.keen@mesacc.edu	Theatre Technology Supervisor Troy Buckey O: 480.461.7832 troy.buckey@mesacc.edu	Technical Director Hannah Guy O: 480.461.7783 hannah.guy@mesacc.edu
----------------------------------------------------------------------------	-------------------------------------------------------------------------------------------	------------------------------------------------------------------------------

### **Box Office:**

O: 480-461-7170  
Open Monday-Friday: 12:00 P.M. to 5:00 P.M.

### **Handicapped Access:**

-Twelve (12) total wheelchair locations are located in the lower aisle and at the back of house.  
-Handicapped restrooms are located at the east end of the lobby's main hallway.  
-Audio assist is available upon request.

## **Emergency Numbers: IN ANY LIFE THREATENING SITUATIONS, IMMEDIATELY CALL 480.784.0911**

**\*All Non - Emergencies call Campus Security at 4804617046**

**Fire:** 480.644.2101 City of Mesa Fire Department  
Mesa Fire Station 204 1426 S. Extension Road, Mesa, AZ 85210-4913

**Police:** 480.644.2211 Mesa Police Department 130 N. Robson, Mesa, AZ 85201

**Hospital:** 480.512.3000 Banner Desert 1400 S. Dobson Road, Mesa, AZ 85202

**Ambulance:** (Emergency - 911) American Ambulance Dispatch 602.255.0134

**Urgent Care Clinic:** 480.644.7900 Concentra Urgent Care 1710 W. Southern Avenue, Mesa, AZ 85202

**Dental Clinic:** 480.447.1901 Shalimar Family Dentistry 2074 East Southern Avenue, Mesa, AZ, 85282

**Chiropractic Clinic:** 480.730.7950 Ross Kevin W. DC 2405 East Southern Avenue, Mesa, AZ, 85282

**Parking:** Theatre parking is located in the lot surrounding the PAC. Additional parking can be arranged in a gated grass lot north of the facility and across an access road.

**Travel:** The College is conveniently located near the US-60 freeway which runs east and west, and near the AZ-101 freeway which runs north and south. From the 60, exit north on Dobson Road, and turn right (east) into the South Parking Lot driveway. From the 101, exit East on the Southern / Baseline off ramp. Turn right (south) onto Dobson. Then turn left (east) into the Southwest Parking Lot at the second stop light. See attachment, p. 9.

**Time Zone:** Arizona does not change for Daylight Savings, so in the summer Arizona is on Pacific Time, and in the winter, Arizona is on Mountain Time.

## **MANAGEMENT**

**Seating: Maximum Capacity (Fire Code):** 454 Fixed Seats

**Green Room:** Approximately 50' x 42'(15.2m x 12.8m) located through two sets of doors and down a hallway from the stage. This is a multifunctional space that is also divided into dressing and makeup areas.

**Stage Managers Positions:** Located in the Control Booth, which is in the back of the auditorium, and up one flight of stairs. It is equipped with a 4-channel intercom main station and audio monitor to the room. Offstage right can also accommodate a stage manager's position.

**Crews:** For events that require minimal support, the venue will provide one Facility Monitor and one House Manager. Events that require more support can provide their own crew or can be provided crew by the facility for additional cost. The crews provided may be made up of our staff, part-time staff, work study employees, students, and/or volunteers.

**Rehearsal Rooms:** Greenroom can be made available for rehearsals depending on the class/event scheduling of the space. Approximately 50' x 42'(15.2m x 12.8m)

**Handicap Access:** The stage, dressing, makeup, and green rooms are all on the same level. The control booth is one flight up, accessed by an elevator and ramp. The Orchestra pit is on level down, accessed by an elevator and ramp.

**Policies:** House opens ½ hour before curtain. Curtain is determined by the user. The building is a smoke free environment.

## **LOAD-IN AREA**

**Dimensions:** The dock height is approximately 2' (0.61m) , and is on the same level as the stage. There is only access for one truck at a time to the Loading Area. The Loading Door is 17'-8" tall by 11'-3" wide (5.2m x 3.5m). Loading Door opens into the scene shop. A second Loading Door, 17'-8" x 11'-6" (4.7m x 3.5m), in the shop opens for direct access to the stage. The Loading Area is on the south-east side of the theatre.

## CARPENTRY

### **Stage Dimensions:**

**Proscenium:** Height 22'-2" to the underside of the acoustical panels and 23'-6" to the underside of the 1st catwalk, Width 47'-0", Stage Depth 40'-6", Apron Depth 11'-5"

**Wing space:** Stage right = 10' x 40', Obstructions: Fly Rail

Stage left = 11'-4" x 40', Obstructions: 8' x 3' HVAC Ducting and Company switches in the UL Corner of the stage

**Height:** from deck to underside of roof truss 48'-2 1/4". There is no grid.

**Orchestra pit:** 32' at its widest from SL to SR, by 14' US to DS, The pit is motorized and adjustable to a depth of 10' below stage level.

**Stage height:** relative to auditorium floor = 3'-0"

**Stage Floor:** Hardboard surface painted black, new condition, traps available under certain consideration and permission

### **House Draperies (Goods):**

House Curtain: Red velour traveler/guillotine combination drops in 1'-5" upstage of the Plaster Line.

Travelers: 2, mid-stage and upstage, black velour, 65' wide by 22'-6" high, with 75% fullness

Traveler operation is located stage right.

Legs: 4 sets, black velour, 18'-0" wide by 22'-6" tall, no fullness

Main Border: 1, red velour, 55' wide by 7' tall, 100% sewn-in fullness

Borders: 6, black velour, 100' wide by 7' tall, no fullness

Scrim: 1, black sharks tooth, 42' wide by 18' high

1, black sharks tooth, 63' wide by 22'-6" high

Cyclorama: 1, 60% Grey Leno-filled Scrim, 63' wide by 22'-6" high

### **Line Set Data:**

**Line Plot:** See attachment, p.10.

**Working height of battens:** high trim 46'-9", low trim 3'-6"

Electrics: high trim 29'-6", low trim 3'-6"

**Battens:** 31, 65' long, 1 1/2" schedule 40, on 9" centers, 7 lift lines

Dedicated Electrics: 4 truss battens, 65' long, 1 1/2" schedule 40, on 8" centers, 7 lift lines

Side Tab Batten: 2, 36'-0" long, 1 1/2" schedule 40, 4 lift lines

**Type:** Lines are single purchase, and are made of 3/4-inch dia. 3-strand wrap of polyester filament/staple blend over polypropylene core. 1<sup>st</sup> Electric is motorized with an arbor wench.

**Arbor capacity:** Maximum load 1200lbs on scenery battens, 2000lbs on 1<sup>st</sup> Electric, 1300lbs on 2<sup>nd</sup>, 3<sup>rd</sup>, and 4<sup>th</sup> Electric.

**Available weight:** Approximately 10,000 lbs. at Loading Gallery

**Loading Gallery:** Stage right, 35'-4" above stage floor

**Pin rail:** Stage right at floor

### **Support Areas:**

**Crossover:** Hallway behind the upstage wall of the stage, 3'-0" kept clear for egress.

**Access:** Stage, Makeup, Dressing rooms, restrooms, and Lobby are on the same level.

**Shop Area:** Scene shop is stage left through 15'-5" tall by 9'-11" wide (4.7m x 3m) motorized rollup door, major woodworking tools are available, welding is available

**Storage:** Limited storage is available in the scene shop, crossover and trap room.

## LIGHTING

**Power for the Dimmer Racks:** 120/208V; 3 phase, 800 Amp Breaker

**Company Switch:** 120V/208V, 200 Amp, 3Ø 4W + G

**Dimmers:** 192 installed - 2.4kW dimmer, 36 portable – 2.4kW Dimmers

**Control Board:** ETC Ion 1500 with 2x20 Fader wing, located in the light booth at the back of the auditorium, up one level with stairs or ramp.

**Houselights:** Control panels are located on a touch panel stage right and in the light booth; the house lights use addresses 193 thru 197 and 205 thru 209 and can be programmed into the light board.

**Circuits:** 228 – 2.4kW circuits, 4 on-stage electrics

### **Circuit Chart:**

Circuits 1-8 are in the 1st Catwalk (Pro Catwalk)  
Circuits 9-28 are in the 2<sup>nd</sup> Catwalk  
Circuits 29-48 are in the 1<sup>st</sup> Catwalk  
Circuits 49-52 are in the SL Box Boom 2  
Circuits 53-58 are in the SL Box Boom 1  
Circuits 59-62 are in the SR Box Boom 2

Circuits 63-68 are in the SR Box Boom 1  
Circuits 69-92 are on the 1<sup>st</sup> Electric  
Circuits 93-112 are on the 2<sup>nd</sup> Electric  
Circuits 113-130 are on the 3<sup>rd</sup> Electric  
Circuits 131-145 are on the 4<sup>th</sup> Electric  
Circuits 146-157 are on Multi Panel #1 on the Loading Gallery

Circuits 158-169 are on Multi Panel #2 on the Loading Gallery, and shared with Torm L and SL Floor Pockets

Circuits 170-172 are on Wall UL.

Circuits 173-175 are on Torm R and shared with DL Floor Pocket.

Circuits 176-178 are in Mid SR Floor Pocket

Circuits 179-181 are in USR Floor Pocket

Circuits 182-184 are in Far USR Floor Pocket

Circuits 185-187 Wall UR

Circuits 188-192 are in the Spot Booth and shared with Wall USC

Circuits 191-192 are in the Orchestra Pit and shared with the Trap Room

Circuits 211-246 are the Strand CD-80 Packs USL

**Front of House Positions:** From the pipe to the stage floor; 3<sup>rd</sup> Catwalk 45'-0 at 45° / 2<sup>nd</sup> Catwalk 45'-0 at 45° / 1<sup>st</sup> Catwalk 26'-0 at 60°

**Instrument Inventory:** See Attachment, p.11.

**Hardware:** 10 – 50lbs. Boom bases, 36 – 24' Side Arms

**Cable:** 4-50', 20-25', 20-10', 10-5' sizes, 95 two-fers\*

**Notes:** Running lights available. \*Numbers of cables are subject to change. There is very limited extra cable while the Rep Plot is hung.



## **WARDROBE**

**Dressing Rooms:** The dressing rooms are made by dividing the greenroom with rolling cabinets. The spaces created by the cabinets are approximately 19' x 17' (5.7m x 5.1m) and 19' x 15' (5.7m x 5.4m).

**Wardrobe Area:** Shares the same space as the green room, dressing rooms, and make-up room.

**Irons:** 1 household steam irons

**Ironing Boards:** one folding

**Steamers:** one portable

**Washer/Dryers:** 1, heavy duty washer and 1, heavy duty dryer

**Racks and Hangers:** 3 – 5' Rolling Racks, and 1 – 4' Rolling Rack

**Quick Change Booths:** Are available with enough notification. They could be located on either side of stage.

**Notes:** Sewing machines and sergers are available with permission and supervision.

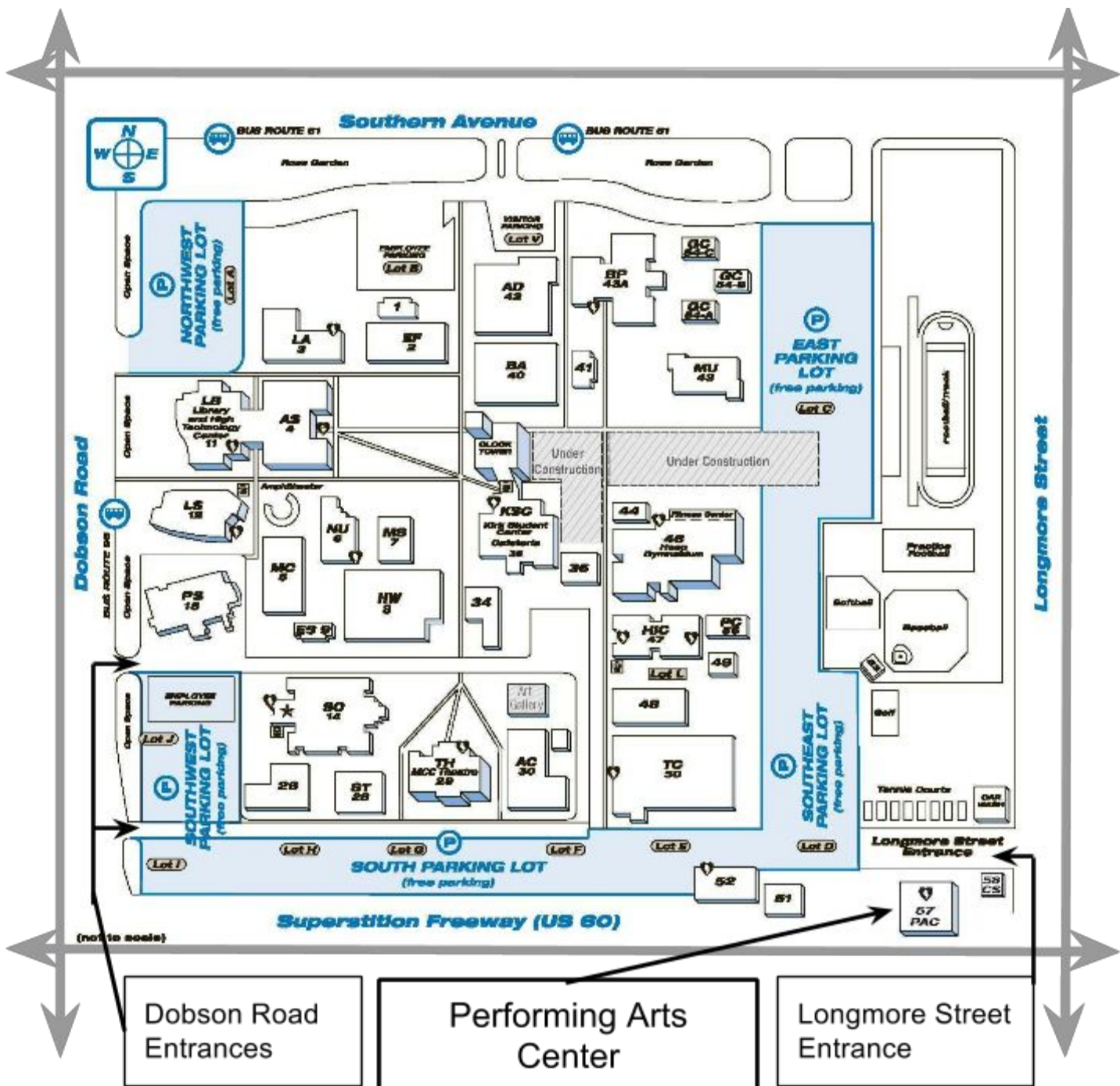
## **MAKEUP ROOM**

**Location:** Approximately 27'-8 x 41' (8.3m x 12.4m), share the same space as the wardrobe and green room areas, and are on the same level as the stage and restrooms

**Equipped:** 20 makeup stations, 2 sinks, controllable lighting



# MAP



Dobson Road Entrances

Performing Arts Center

Longmore Street Entrance

## LINE SET SCHEDULE

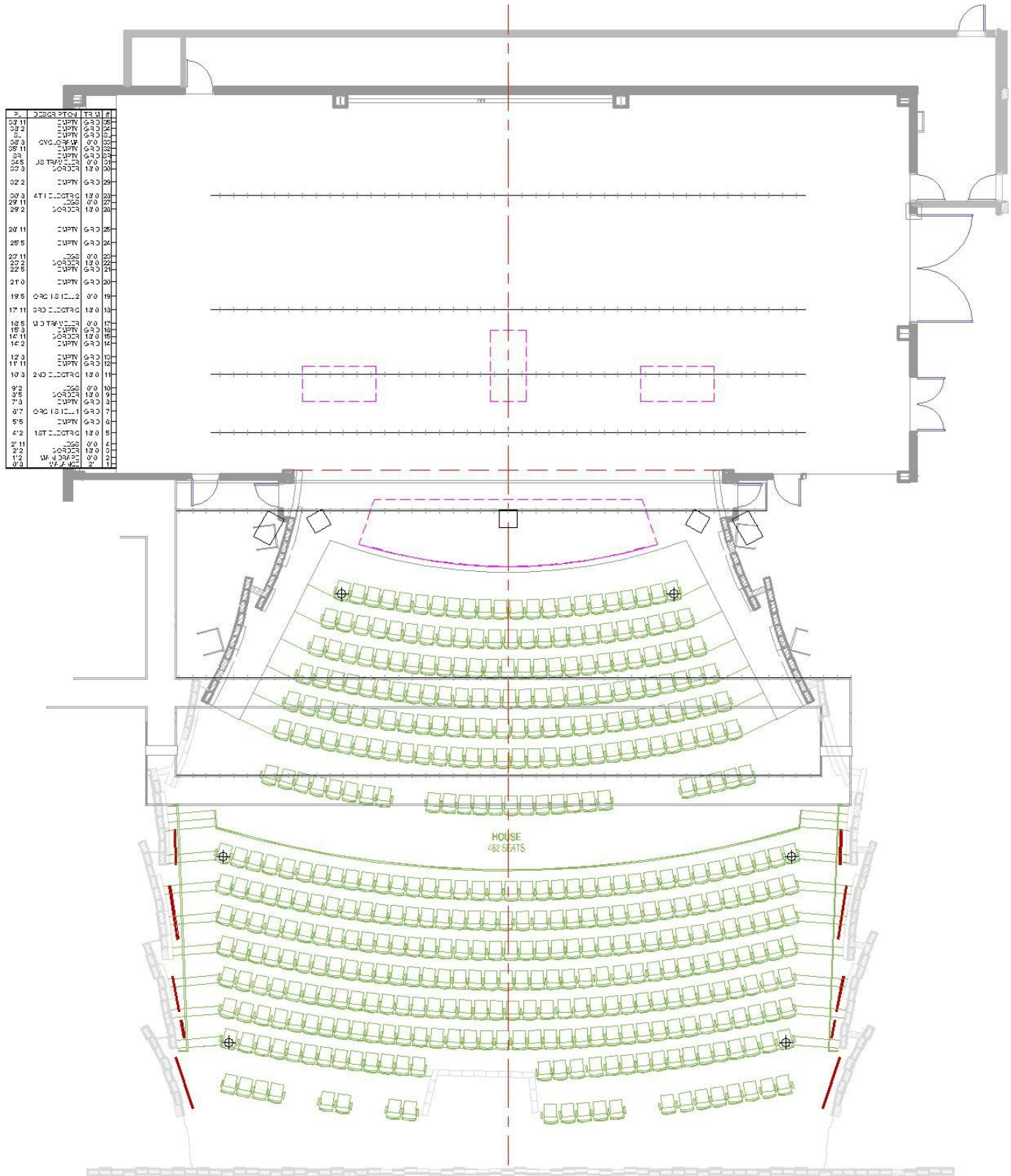
SET No.	DISTANCE FROM PL	DESCRIPTION
1	0'-8	MAIN BORDER
2	1'-5	MAIN CURTAIN
3	2'-2	BORDER
4	2'-11	LEGS
5	4'-2	1ST ELECTRIC
6	5'-5	1A ELECTRIC
7	6'-6	SHELL CEILING #1
8	7'-8	
9	8'-5	BORDER
10	9'-2	LEGS
11	10'-8	2ND ELECTRIC
12	11'-11	2A ELECTRIC
13	12'-8	
14	14'-2	
15	14'-11	BORDER
16	15'-8	MID TRAVELER
17	16'-5	
18	17'-11	3RD ELECTRIC
19	19'-5	SHELL CEILING #2
20	21'-0	
21	22'-5	
22	23'-2	
23	23'-11	BORDER
24	25'-5	LEGS
25	26'-11	BORDER
26	20'-5	LEGS
27	29'-11	BLACK SCRIM
28	30'-8	
29	32'-2	4TH ELECTRIC
30	33'-8	
31	34'-5	BORDER
32	35'-2	REAR TRAVELER
33	35'-11	
34	36'-8	CYC
35	37'-5	
36	38'-2	SR SIDE TAB
37	38'-11	SL SIDE TAB

## LIGHTING INSTRUMENT INVENTORY

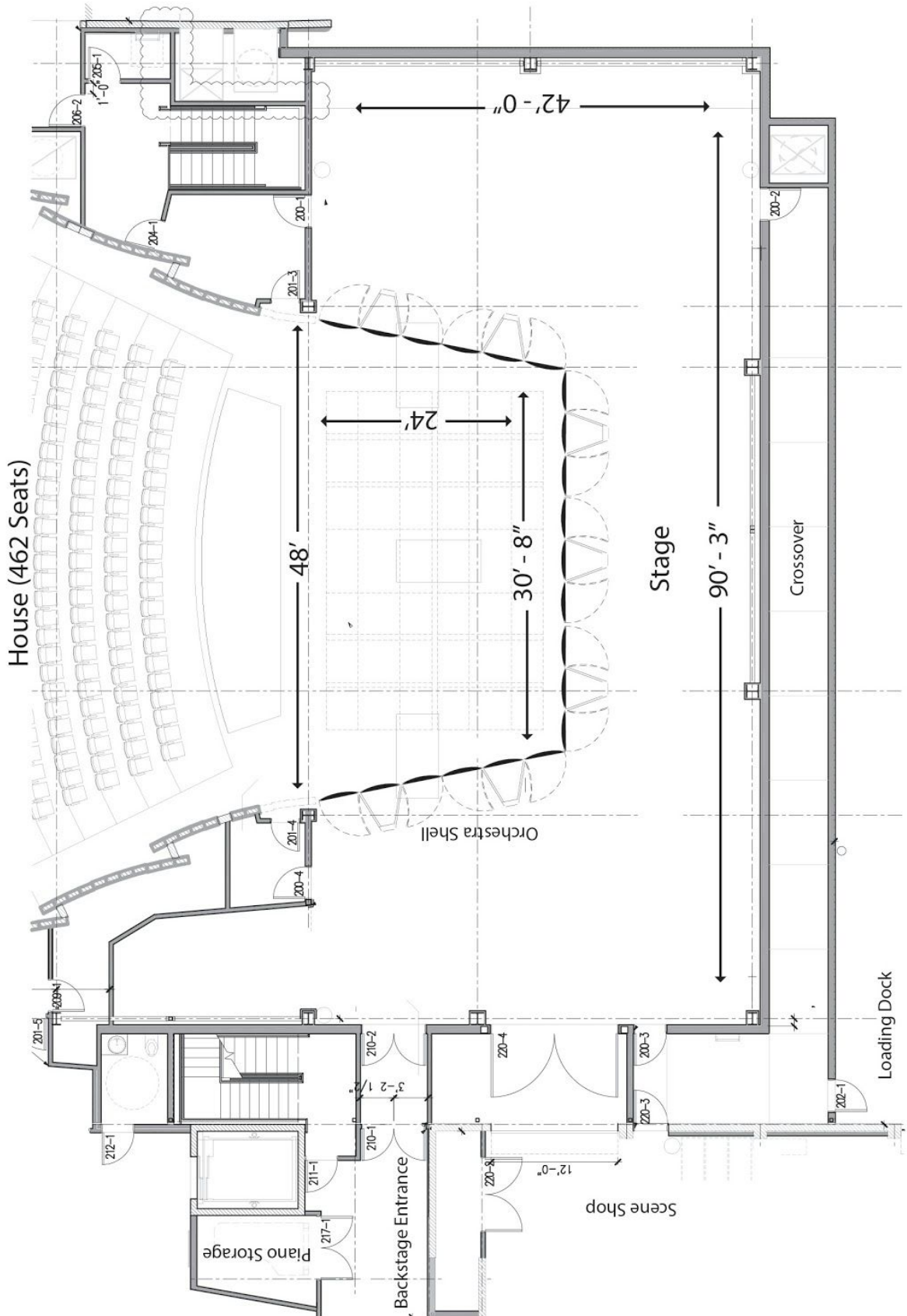
Type	Instrument	Ansi Code and Wattage	Gel Frame Size	Amount
<b>Ellipsoidal</b>	14° Source Four	HPL 575/115 575w	7-1/2" x 7-1/2"	10
	19° Source Four	HPL 575/115 575w	6-1/4" x 6-1/4"	40
	26° Source Four	HPL 575/115 575w	6-1/4" x 6-1/4"	60
	36° Source Four	HPL 575/115 575w	6-1/4" x 6-1/4"	60
	50° Source Four	HPL 575/115 575w	6-1/4" x 6-1/4"	20
			Ellipsoidal Total:	180
<b>Fresnel</b>	7" Source Four Fresnel	HPL 575/115 575w	7-1/2" x 7-1/2"	60
<b>PARs</b>	Source Four PAR - 4 Lenses	HPL 575/115 575w	7-1/2" x 7-1/2"	70
<b>Cyc Units</b>	Altman Spectral Cyc 200	200 Watts Max	N/A	10
<b>Followspots</b>	Lycian 1209 Midget	575 HMI	5" Diameter	2
<b>Intelligent</b>	Vari-Lite 2500 Spot	700w Short Arc Lamp	N/A	6
	Vari-Lite 2500 Wash	700w Short Arc Lamp	N/A	4
				Total
<b>Color Scrollers</b>	Apollo Smart Color Pro 7.25 (new)	N/A	Adjustable	18
	Apollo Smart Power 600w	600w	N/A	1
	Apollo Smart Color 7.25 (Old)	N/A	Adjustable	12
	Apollo PSU 400W	400w	N/A	1
<b>Accessories</b>	6-1/4" x 6-1/4" Gel Frames			180
	7-1/2" x 7-1/2" Gel Frames			130
	Source Four Size Drop-In Iris			30
	Source Four Gobo Frame A			30
	6.25" Donut			30
	7.5" Top Hat			25
	7.5" Barndoor			50

# THEATRE GROUND PLAN

\*Not to scale



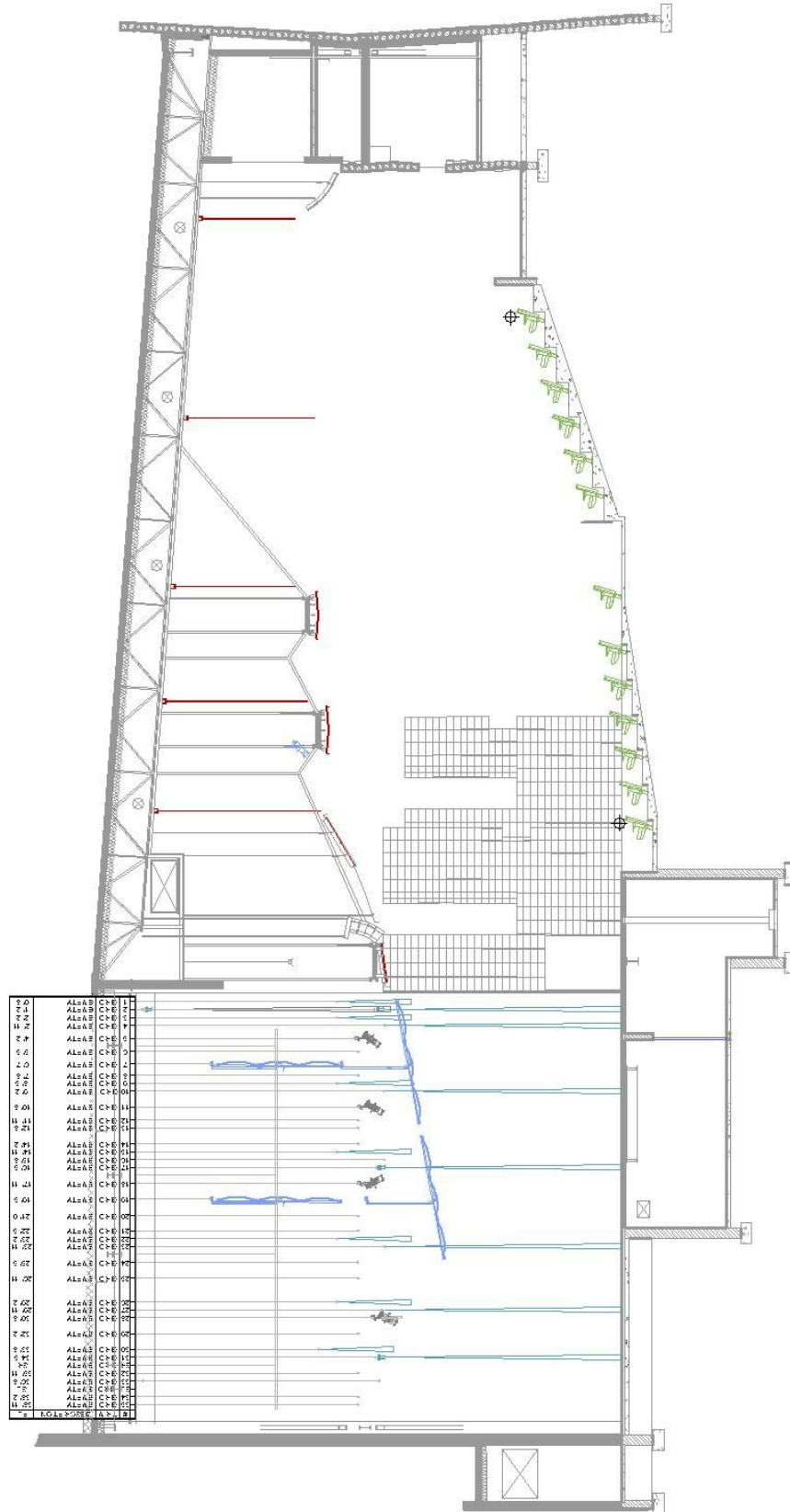
# APPROXIMATE STAGE DIMENSIONS





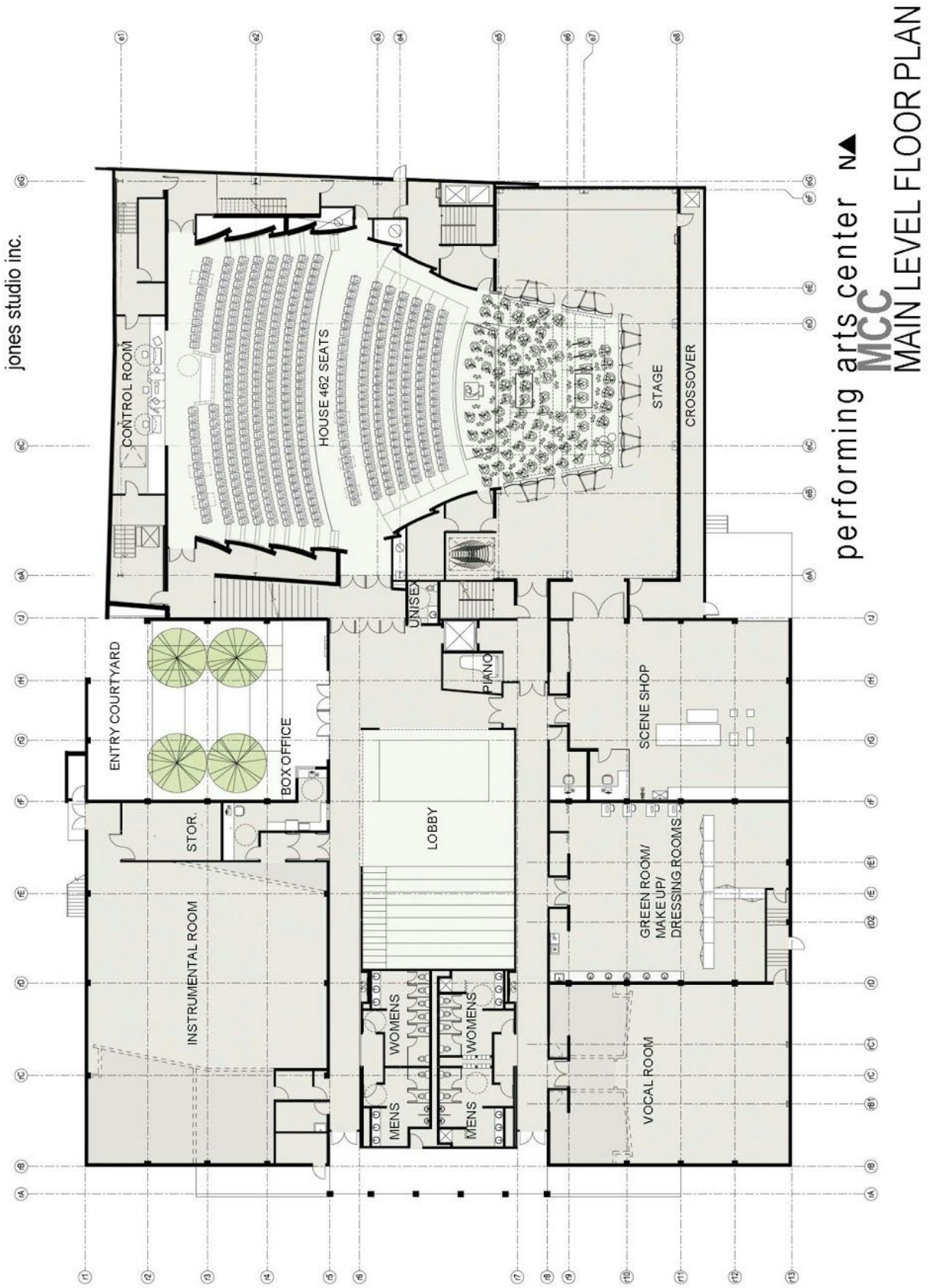
# THEATRE SECTION

\*Not to Scale



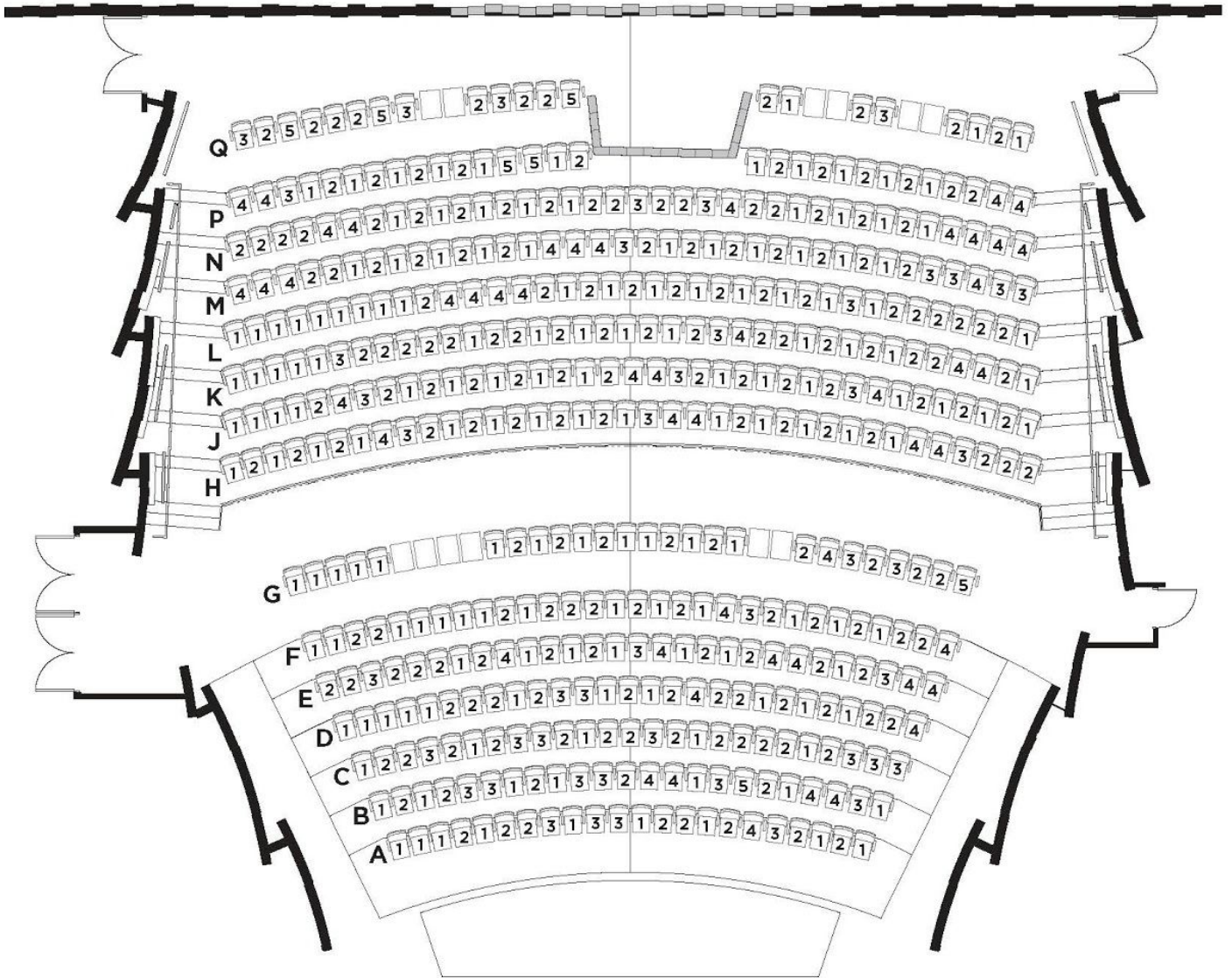
# MAP OF THE THEATRE BUILDING

\*NOT TO SCALE.



# AUDIENCE SEATING LAYOUT

\*NOT TO SCALE





## **A/V CONNECTION LIST**

<p><b><u>Mic Inputs</u></b>          Mic lines 1 thru 24 are on the SR Pro. Wall SP1          Mic lines 25 thru 48 are on the SL Pro. Wall SP2          Mic lines 49 thru 56 are on the USR Wall SP3          Mic lines 57 thru 64 are on the USL Wall SP4          Mic lines 65 and 66 are in the SL Vestibule VSL          Mic lines 67 and 68 are on the DSL Panel DSL          Mic lines 69 thru 70 are in the SR Vestibule VSR          Mic lines 71 thru 72 are in the DSR Panel DSR          Mic lines 73 thru 84 are in the SR Pit PIT1          Mic lines 85 thru 96 are in the SL Pit PIT2          Mic lines 97 thru 104 are in the SR Trap room TRP1          Mic lines 105 thru 112 are in the SL Trap room TRP2          Mic lines 113 thru 114 are on the 1st Catwalk CW1          Mic lines 115 thru 118 are on the 2nd Catwalk CW2          Mic lines 119 thru 120 are on the 3rd Catwalk CW3          Mic lines 120 thru 124 are in the Gallery GAL          Mic lines 125 thru 126 are in the Audience Aisle TEC          Mic lines 127 thru 128 are in the SR Box Boom BB1          Mic lines 129 thru 130 are in the SL Box Boom BB2          Mic lines 131 thru 132 are on the SR Pro. Wall SMP1          Mic lines 133 thru 134 are in the Control Booth SMP2          Mic lines 135 thru 140 are in the Control Booth VOP          Mic lines 141 thru 152 are in the Control Booth MIX 2          Mic lines 153 thru 168 are in the House Mix Pos. MIX          Mic lines 169 thru 170 are in the Lobby LBY</p>	<p><b><u>Speaker Connections EFX/MON</u></b>          EFX/MON lines 1 and 2 are on the SR Pro. Wall SP1          EFX/MON lines 3 and 4 are on the SL Pro. Wall SP2          EFX/MON lines 5 thru 6 are on the USR Wall SP3          EFX/MON lines 7 thru 8 are on the USL Wall SP4          EFX/MON lines 9 and 10 are in the SL Vestibule VSL          EFX/MON lines 11 and 12 are on the DSL Panel DSL          EFX/MON lines 13 thru 14 are in the SR Vestibule VSR          EFX/MON lines 15 thru 16 are in the DSR Panel DSR          EFX/MON lines 17 thru 18 are in the SR Pit PIT1          EFX/MON lines 19 thru 20 are in the SL Pit PIT2          EFX/MON lines 21 thru 22 are in the SR Trap room TRP1          EFX/MON lines 23 thru 24 are in the SL Trap room TRP2          EFX/MON lines 25 thru 26 are on the 2nd Catwalk CW2          EFX/MON lines 27 thru 28 are on the 3rd Catwalk CW3          EFX/MON lines 29 thru 30 are in the Gallery GAL          EFX/MON line 31 is in the SR Box Boom BB1          EFX/MON line 32 is in the SL Box Boom BB2          EFX/MON line 33 is in the 1st Catwalk LEFT ARRAY          EFX/MON line 34 is in the 1st Catwalk CENTER ARRAY          EFX/MON line 35 is in the 1st Catwalk RIGHT ARRAY          Surround Speakers SS1 thru SS12 distributed around the House          Rear Speakers RS1 thru RS5 distributed in the BOH</p>
<p><b><u>Signal Returns Lines</u></b>          Return lines 1 thru 4 are on the SR Pro. Wall SP1          Return lines 5 thru 8 are on the SL Pro. Wall SP2          Return lines 9 thru 12 are on the USR Wall SP3          Return lines 13 thru 16 are on the USL Wall SP4          Return lines 17 and 18 are in the SL Vestibule VSL          Return lines 19 thru 22 are on the DSL Panel DSL          Return lines 23 thru 24 are in the SR Vestibule VSL          Return lines 25 thru 28 are in the DSR Panel DSR          Return lines 29 thru 32 are in the SR Pit PIT1          Return lines 33 thru 36 are in the SL Pit PIT2          Return lines 37 thru 38 are in the SR Trap room TRP1          Return lines 39 thru 40 are in the SL Trap room TRP2          Return lines 41 thru 42 are on the 1st Catwalk CW1          Return lines 43 thru 44 are on the 2nd Catwalk CW2          Return lines 45 thru 46 are on the 3rd Catwalk CW3          Return lines 47 thru 50 are in the Gallery GAL          Return lines 51 thru 52 are in the Audience Aisle TEC          Return lines 53 thru 54 are in the SR Box Boom BB1          Return lines 55 thru 56 are in the SL Box Boom BB2          Return lines 57 thru 62 are in the Control Booth VOP          Return lines 63 thru 74 are in the Control Booth MIX 2          Return lines 75 thru 76 are in the Lobby LBY          Return lines 77 thru 78 are in the 1st Catwalk LEFT ARRAY          Return lines 79 thru 80 are in the 1st Catwalk CENTER ARRAY          Return lines 81 thru 82 are in the 1st Catwalk RIGHT ARRAY          Return line 83 is in the 1st Catwalk LEFT SUB          Return line 84 is in the 1st Catwalk RIGHT SUB</p>	<p><b><u>Coax Connections</u></b>          CAMERA 1A and 1B are in the SR BOH Niche CAM-1          CAMERA 2A and 2B are in the Control Booth CAM-2          CAMERA 3A and 3B are in the SL BOH Niche CAM-3          COAX lines 1 and 2 are on the SR Pro. Wall SP1          COAX lines 3 and 4 are on the SL Pro. Wall SP2          COAX lines 5 thru 6 are on the USR Wall SP3          COAX lines 7 thru 8 are on the USL Wall SP4          COAX line 9 is on the DSL Panel DSL          COAX line 10 is on the DSR Panel DSR          COAX lines 11 thru 12 are in the SR Pit PIT1          COAX lines 13 thru 14 are in the SL Pit PIT2          COAX lines 15 thru 16 are in the SR Trap room TRP1          COAX lines 17 thru 18 are in the SL Trap room TRP2          COAX line 19 is on the 1st Catwalk CW1          COAX line 20 is on the 2nd Catwalk CW2          COAX line 21 is on the 3rd Catwalk CW3          COAX lines 22 thru 29 are in the Control Booth VOP          COAX lines 30 thru 31 are in the Control Booth MIX 2          COAX lines 32 thru 35 are in the House Mix Pos. MIX          COAX line 36 is in the Lobby LBY          COAX line 37 is in the Control Booth VP</p>

## A/V CONNECTION LIST 2

### Audio Data EtherCON Category 5e

DATA lines 1 and 2 are on the SR Pro. Wall SP1  
DATA lines 3 and 4 are on the SL Pro. Wall SP2  
DATA lines 5 thru 6 are on the USR Wall SP3  
DATA lines 7 thru 8 are on the USL Wall SP4  
DATA lines 9 and 10 are in the SL Vestibule VSL  
DATA lines 11 and 12 are on the DSL Panel DSL  
DATA lines 13 thru 14 are in the SR Vestibule VSR  
DATA lines 15 thru 16 are in the DSR Panel DSR  
DATA line 17 is in the SR Pit PIT1  
DATA line 18 is in the SL Pit PIT2  
DATA line 19 is in the SR Trap room TRP1  
DATA line 20 is in the SL Trap room TRP2  
DATA line 21 is on the 1st Catwalk CW1  
DATA line 22 is on the 2nd Catwalk CW2  
DATA line 23 is on the 3rd Catwalk CW3  
DATA lines 24 thru 25 are in the Audience Aisle TEC  
DATA lines 26 thru 27 are in the SR Box Boom BB1  
DATA lines 28 thru 29 are in the SL Box Boom BB2  
DATA lines 30 thru 31 are on the SR Pro. Wall SMP1  
DATA lines 32 thru 33 are in the Control Booth SMP2  
DATA lines 34 thru 35 are in the Control Booth VOP  
DATA lines 36 thru 39 are in the Control Booth MIX 2  
DATA lines 40 thru 45 are in the House Mix Pos. MIX  
DATA line 46 is in the Lobby LBY  
DATA lines 47 thru 48 are in the Control Booth VP  
DATA lines 49 thru 50 are in the Control Room CAM-1  
DATA lines 51 thru 52 are in the SR BOH Niche CAM-2  
DATA lines 53 thru 54 are in the SL BOH Niche CAM-3  
DATA lines 55 thru 56 are in the 2nd Floor Lobby LVP  
DATA line 57 thru 58 are behind Lobby Displays FPD-1 + 2  
DATA line 59 is in the 1st Catwalk LEFT ARRAY  
DATA line 60 is in the 1st Catwalk CENTER ARRAY  
DATA line 61 is in the 1st Catwalk RIGHT ARRAY  
DATA line 62 is in the 1st Catwalk LEFT SUB  
DATA line 63 is in the 1st Catwalk RIGHT SUB

### Media Ports EtherCON Category 5e

MEDIA lines 1 and 2 are on the SR Pro. Wall SP1  
MEDIA lines 3 and 4 are on the SL Pro. Wall SP2  
MEDIA lines 5 thru 6 are on the USR Wall SP3  
MEDIA lines 7 thru 8 are on the USL Wall SP4  
MEDIA lines 9 and 10 are in the SL Vestibule VSL  
MEDIA lines 11 and 12 are on the DSL Panel DSL  
MEDIA lines 13 thru 14 are in the SR Vestibule VSR  
MEDIA lines 15 thru 16 are in the DSR Panel DSR  
MEDIA lines 17 thru 18 are in the SR Pit PIT1  
MEDIA lines 19 thru 20 are in the SL Pit PIT2  
MEDIA lines 21 thru 22 are in the SR Trap room TRP1  
MEDIA lines 23 and 24 are in the SL Trap room TRP2  
MEDIA line 25 is on the 1st Catwalk CW1  
MEDIA line 26 is on the 2nd Catwalk CW2  
MEDIA line 27 is on the 3rd Catwalk CW3  
MEDIA lines 28 thru 29 are in the Gallery GAL  
MEDIA lines 30 thru 31 are in the Audience Aisle TEC  
MEDIA lines 32 thru 33 are in the SR Box Boom BB1  
MEDIA lines 34 thru 35 are in the SL Box Boom BB2  
MEDIA lines 36 thru 37 are on the SR Pro. Wall SMP1  
MEDIA lines 38 thru 39 are in the Control Booth SMP2  
MEDIA line 40 is in the Control Room CAM-1  
MEDIA line 41 is in the SR BOH Niche CAM-2  
MEDIA line 42 is in the SL BOH Niche CAM-3  
MEDIA lines 43 thru 48 are in the Control Booth VOP  
MEDIA lines 49 thru 50 are in the Control Booth MIX 2  
MEDIA lines 51 thru 52 are in the House Mix Pos. MIX  
MEDIA lines 53 thru 54 are in the Lobby LBY  
MEDIA lines 55 thru 56 are in the Control Booth VP  
MEDIA lines 57 thru 58 are in the 2nd Floor Lobby LVP  
MEDIA line 59 thru 60 are behind Lobby Displays FPD-1 + 2  
MEDIA lines 61 and 62 are in the Vocal Room VOC 241  
MEDIA lines 63 and 64 are in the Instrument Room INST 229  
V1 SL Control Booth  
V2 SR Control Booth  
V3 A/V | Amp Room  
V4 SL Spot Booth  
V5 SR Spot Booth  
V6 Scene Shop  
V7 Office 221 (Venue Manager)  
V8 Office 242 (Scene Shop Office)  
V9 Box Office  
V10 Box Office  
V11 West wall Greenroom  
V12 East Wall Greenroom  
V13 is in SR Trap Room  
V14 is in SL Trap Room  
V15 Office 314 (Theatre Technology Supervisor)  
V16 Dimmer Room  
V2-1 is on the SR Pro  
V2-2 is on the SL Pro

# A/V SIGNAL FLOW

